

# WORLD'S FAIR INSPIRED DESIGN OF CAFE

## NEWLY REMODELED ENLARGED VAN'S CAFE MODELED AFTER MODERNISTIC MOTIF OF WORLD'S FAIR STRUCTURES

Even before the world's fair in Chicago had officially opened but when the modernistic motif began to take shape in the early construction stages of the international exposition, the inspiration had been provided for the remodeling and enlargement of Van's cafe, now completed in its every detail and open for public inspection.

Patterned after the world's fair structures, in modernistic design throughout, the newly enlarged cafe carries out the architectural theme throughout.

**Finished in Cream**  
The exterior, transcending from the semi-cabled roof with cupolas, to the cornice and side walls, is of the latest design in architecture, modernistic in vogue and application.

Finished in a cream stucco, the building rises in prominence by virtue of its design. It has an subsoves roof of colored and ornamental shingles transcending down to the cornice that folds into the walls.

Five metal strips, dressed in dupo finish, surround the building to emphasize the modernistic touch. The fine are approximately six inches in width and are finished in black.

To complete the color effect, a two foot black vitrolite strip appears at the base. The color is harmonious and welcome, carrying out the theme in appealing design.

Adding to the exterior significance are sand-blasted windows of modernistic design with horizontal windows in the side walls, centering at Zion, Ill., and is frequently mentioned as Voliva's successor. Neal is preaching in Chicago in defiance of Voliva's orders.

The windows are decorated with chromium, adding to the attractiveness.

**Interior in Tiffany**

Nearly doubling the seating capacity on the interior, the foyer opens on a clever arrangement of tables at the left. If you choose, booths are available to your right. It is a sort of horseshoe shape with a half partition separating booths from the tables and lunch counter.

In the middle, the service counter finds at its back the beer and soda fountain and equipment for handling pastries, etc.

The cashier's desk is at the front, meeting both sides of the service accommodations.

The interior walls are colorfully depicted in tiffany, blended in drapes at the windows of red with the customary shades of kindred hues.

Standing nearly 4 feet high, is a strip of paneling. The paneling and wainscoting are of birch, carried out in artistic and modernistic style.

Expressive lighting effects are found throughout and ceiling fans add comfort for the summer patron. Etched mirrors also are found at the door.

Another feature of comfort and convenience is the washed air cooling system which changes the air in the interior at regular intervals insuring crisp, fresh air at all times.

**Second Floor Modernistic**  
With the cafe occupying the entire ground floor, a look into the upstairs finds eight bed rooms, a living room and two bathrooms. The second floor, likewise, is carried out in modernistic vogue, emphasizing the trim of the interior walls, lighting fixtures and other appointments.

Electrical devices are stressed in other commodious equipment. Four large compressors generate refrigeration for the large vegetable storage vault, the beer and soda fountains and the all service refrigerator. All are powered by electricity.

## Zion Apostle Fights Voliva



Apostle Guy K. Neal, above, is at odds with Wilbur Glenn Voliva, head of the religious movement centering at Zion, Ill., and is frequently mentioned as Voliva's successor. Neal is preaching in Chicago in defiance of Voliva's orders.

## FIVE TONS HAY AND BARN LOST IN FIRE

Blind Lake—Carl Hilderbrandt lost his barn and five tons of hay in a fire Saturday evening.

Of unknown origin, the blaze was beyond control before the fire was discovered.

## INJURES THUMB IN RECENT ACCIDENT

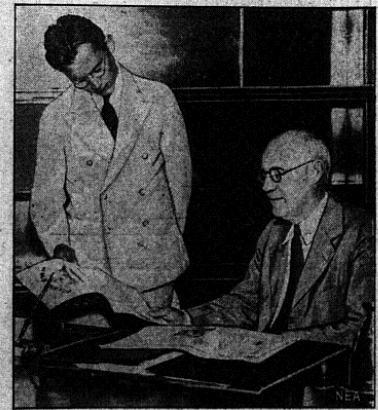
Wabedo—The axe with which Corwin Felton was cutting wood last week, slipped, nearly severing the thumb of his left hand. He was taken to Pine River, and then to Brainerd, to treat the injured member.

Corwin is now in Pine River recuperating in the home of his grandmother, Mrs. Felton.

phazized by the trim of the interior walls, lighting fixtures and other appointments.

Electrical devices are stressed in other commodious equipment. Four large compressors generate refrigeration for the large vegetable storage vault, the beer and soda fountains and the all service refrigerator. All are powered by electricity.

## Fugitive Who Made Good Pardoned



It was a dramatic moment for Paul Maxim, 26, fugitive from an Ohio reformatory, when he watched Governor White of Ohio sign the pardon that will enable him to resume his successful career as an advertising executive. Maxim was sentenced for the theft of class jewelry from a small Ohio school, escaped six years ago, and under an assumed name had won an uphill battle to make good when captured recently in Chicago.

## RURAL SOCIETY

**Aid Place Meeting Sept. 8 Changed**

Blind Lake—Plans for the meeting of the ladies' circle have been changed. They will meet with Mrs. E. McKebe September 6, instead of with Mrs. J. Shepard.

**Birthday Party for Miss Lillie Anderson**

South Long Lake—Friends of Miss Lillie Anderson pleasantly surprised her at her home Friday. The occasion was in celebration of her birthday. A social time was enjoyed. At a late hour delightful refreshments were served.

## OWNER DEVELOPS CAFE FROM SMALL LUNCH COUNTER TO ONE OF FINEST EATING PLACES IN NORTHWEST AREA

In developing Van's cafe to a point where it has become known throughout the United States, being a popular eating place for tourists as well as for an established local clientele, C. C. Van Eesen has stressed service and congeniality.

Mr. Van Eesen assumed ownership of the cafe, then a small lunch room of about one-fourth the present size and boasting of only a lunch counter, in 1921. Since that time he has gradually expanded the business until it had outlived its size and development was necessary to take care of the fast growing throng that frequented Van's cafe for their meals.

It was in 1916 that Mr. Van Eesen first came to Brainerd. He was

sent here as manager of the F. W. Woolworth store. He remained here for one year and then was transferred to F. W. Woolworth Co. at Kenosha, Wis., where he remained until 1921.

Then it was that he entered the restaurant business, becoming associated with his father-in-law, M. DeRoche, in the operation of the lunch counter. In 1924, Mr. Van Eesen purchased the business and immediately expanded it, adding new fixtures and otherwise modernizing it.

Since 1924, the cafe has gradually outgrown its size, winning a high class clientele by virtue of its fine foods and excellent service.

He expanded the place in recent

years until expansion was inevitable. He then purchased the real estate and immediately began plans for the development that now is being heralded as the finest in the Northwest.

Mr. Van Eesen is married and has three children. Mrs. Van Eesen was the former Miss Clara DeRoche, who he married in January, 1917.

**Buy Hour Club Takes Up County Project**

Lake Edwards—The Lake Edwards Buy Hour club met at the home of Mrs. David King on Thursday with eight members and one visitor in attendance. The club signed to take the coun-

ty project. "Clothing Construction Made Easy."

Mrs. Charles L. Bedore and Mrs. Melvin Gordon were chosen leaders.

**Mrs. Harry Hall is president.** Miss Anna Bedore, secretary and Mrs. Ben Miller reported. After the meeting a delightful luncheon was served by the hostess.

**Mrs. Jackson Honor Guest at Party**  
South Long Lake—Friends of Mrs. Jackson celebrated her birthday time was spent in a social manner. Refreshments were served at a late hour.

.....it's ready, folks! Brainerd's newest restaurant----

# VAN'S NEW CAFE

and this is your invitation to visit and inspect Van's New Cafe

- ... COUNTER and TABLE SERVICE
- ... BOOTHS
- ... PRIVATE DINING ROOM for Clubs and Parties
- ... SPECIAL MENUS
- ... SHORT ORDERS
- ... WASHED AIR SYSTEM INSURES COOL COMFORT AT VAN'S

Now it's ready—Brainerd's newest restaurant. And we hope you'll pardon us when we say we're proud of it ourselves. After several months of rebuilding, remodeling and redecorating, including the addition and installment of the very newest and most modern restaurant fixtures, Van's Cafe is open.

We want you to see it—inspect it and if you wish try the excellent food that Van's have always been noted for. We've spared no expense in providing for Brainerd the very best obtainable in a modern eating place. For example: Van's Cafe includes a new type washed air system which assures perfect comfort at all times. Counter, table service and booths, which enables you to get a hurry-up meal or one of leisure. Private dining room for clubs and parties. Arrange by appointment for this service. And Van's modern kitchen where the best of foods are prepared.

We want you to come . . . bring your friends and see and inspect Van's New Cafe.

## COME ANY TIME--OPEN DAY AND NIGHT

Corner 6th and Washington Streets  
Junction Highways Nos. 2, 18, 19 and 27